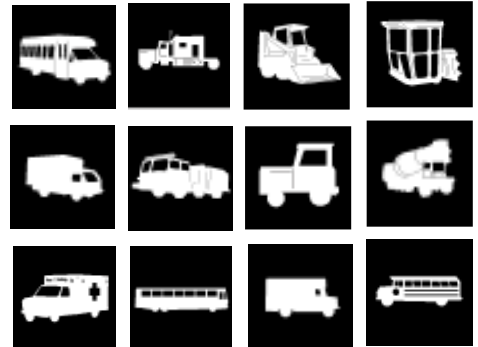


Comfort HD2.0



Fuel Fired Heater

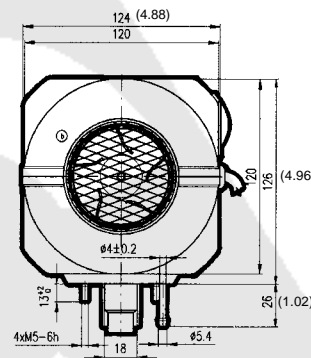
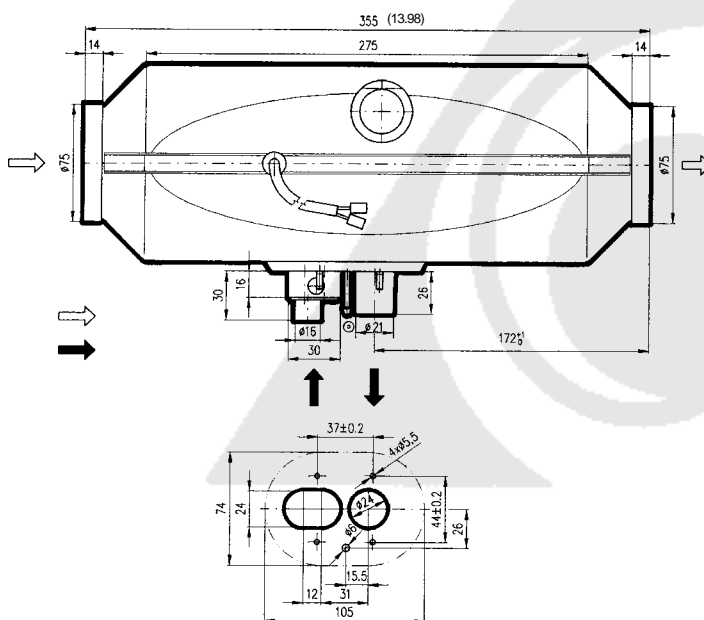


Specifications

- 3000-6800 BTU/HR
- 50 CFM
- OPERATING VOLTAGE RANGE 10.5V-15V OR 21-30V
- 12 OR 24 VOLT
- WEIGHT - 7.7 LBS
- DIMENSIONS - 5"H X 5"W X 14"L
- FUEL CONSUMPTION .026-.058 gal/hr
- POWER CONSUMPTION -STARTING - 100 W MAX (8.3 AMPS @ 12V OR 4.15 AMPS @ 24V)
OPERATING - 30 W MAX (2.5 AMPS @ 12V OR 1.25 AMPS @ 24V)

Features

- This diesel fuel powered heater can serve as a primary auxilliary heater and ventilator for the driver and passengers while driving or as a heater without the engine idling for extended or overnight stops.
- The heater is compact, lightweight, and quiet when operation. Its efficient operation reduces both fuel costs and air pollution, while it complies with no-idle laws.
- The system is low cost and reduces maintenance expenses.



DRAWING
DIMENSIONS
IN MM (IN)



AUTOMATIC
CONTROL



MANUAL
CONTROL